

The Student Readiness Analysis

Quantifying the ROI of Practice-Ready Medical Education

THE CONTEXT

The Crisis of Clinical Inexperience

Graduate medical education often relies on “low-fidelity” tools (LMS modules or paper logs) that do not reflect the high-velocity digital environment of modern healthcare.



Technical Fluency as a Core

Nexus transforms the EHR from a record-keeping tool into a teaching instrument.

✓ **Mastery of High-Stakes Workflows:**

Students graduate with hands-on experience in e-prescribing (including controlled substances where permitted), real-time lab ordering, and multidisciplinary coordination.

✓ **Digital Document Accuracy:**

Real-time validation and faculty feedback loops ensure students learn the “art of the note” early, reducing clinical errors in their first professional year.



Get in Touch

Sales: 561-403-1209
sales@nexusclinical.com



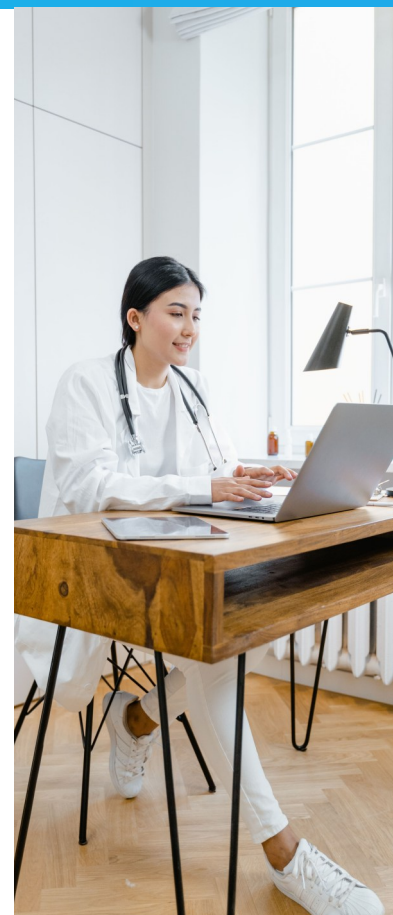
Clinical Reasoning & Data Synthesis

✓ **Beyond Simulation:**

Students manage longitudinal patient records. They learn to track progress over weeks and months, simulating the continuity of care required in private practice.

✓ **Outcome Tracking:**

Students can see the results of their interventions through data visualization, building an evidence-based approach to patient care.



Institutional ROI: The Employability Edge

✓ **Employer Acquisition Cost:**

Clinics prefer Nexus-trained graduates because they require 60% less technical orientation.

✓ **Graduate Confidence:**

Post-graduation surveys show that students trained on enterprise-grade EHRs report significantly higher “Day 1 Readiness” scores than those trained on legacy or paper-based systems.

✓ **Brand Authority:**

Positioning your University as a “Practice-Ready” institution increases student recruitment and strengthens hospital partnership opportunities.

Get in Touch

Sales: 561-403-1209
sales@nexusclinical.com